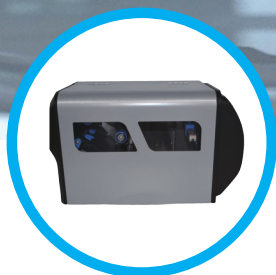
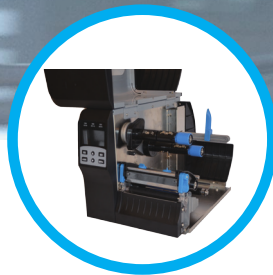




- Heavy loading cutter with 1 million times of long service life
- LCD control panel for better interactivity



- Durable all-metal frame construction
- Clear viewing window
- Simplified side-loading media and ribbon



- Support up to 120mm label width
- Support O.D. 81.3mm ribbon roll
- Support O.D. 8" label roll



- 5-classes of adjustable mechanism pressure
- Ribbon anti-wrinkle equipment
- Options include: Auto-cutter, Peel-kit

High quality · High performance · Best value

# LT-430 Industrial Label Printer

Support 7x24 hours continuous operation  
Thermal transfer & direct thermal printing methods

# LT-430

## Specification



Resolution  
300DPI



Printing Speed  
51-250mm/s 2-10inch/s



Communications  
USB + Serial + Ethernet



Display  
LCD control panel for better interactivity



Power input  
input : AC 200V-240V 1.5A 50/60 Hz



Printer Dimensions  
425mm x 255mm x 265mm



### Media specifications

Continuous paper, gap paper,  
fan-fold paper, black mark paper  
Width 20-118mm ( $\pm 0.5$ mm) include  
backing paper Out diameter 203mm (max)



### Ribbon specifications

Outer diameter 81.3mm (max) , Width 30-110mm  
Ribbon Length 450m, Ribbon Core Size: 25.4mm (1inch )

